

# North Highline Survey Report— 2nd Phase



November 29, 2005

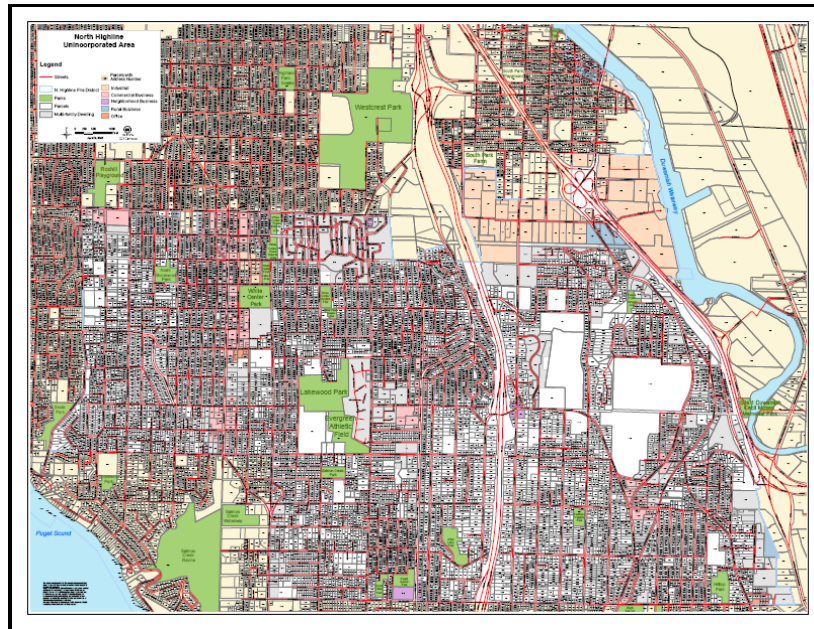
## **Project Overview—2<sup>nd</sup> Phase of Community Survey**

The Connections Group is working with Nesbitt Planning and Management as part of a county - funded study to gauge the effects of governance options, including annexation and incorporation, on local services, taxation and representation. The area of North Highline includes White Center, Boulevard Park, Beverly Park, Top Hat and Northern Shorewood and is one of the most ethnically diverse areas of King County, with large Asian and Latino populations.

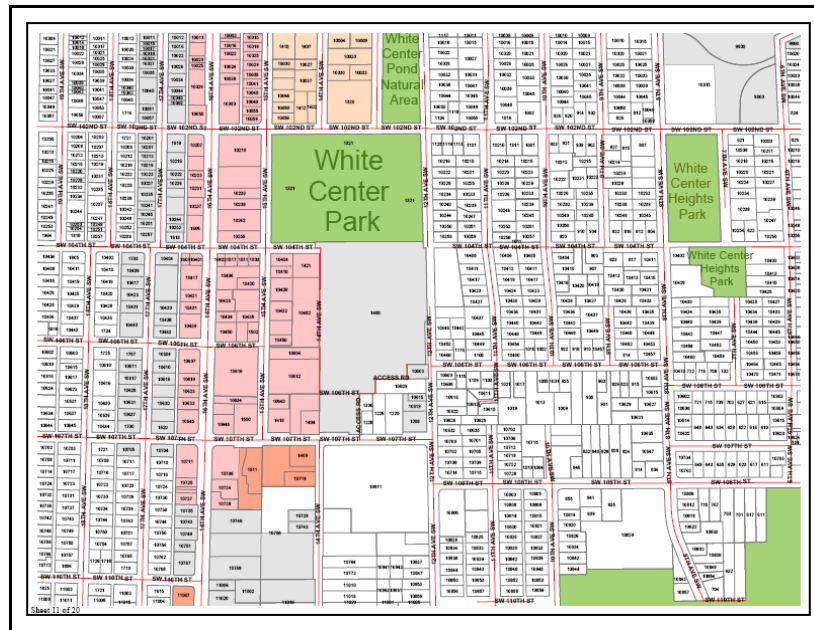
The governance study included two public surveys. The first survey was to assess public opinion about incorporation and/or annexation prior to development of the analysis done during the project. The second survey, the subject of this report, was intended to determine public opinion about the preliminary recommendation by the North Highline Unincorporated Area Council (NHUAC) to annex to the City of Burien, based on the findings generated by the study.

Originally slated for October but then rescheduled, this survey took place between November 8<sup>th</sup> and November 21<sup>st</sup>, when The Connections Group dispatched groups of informed, accessible and enthusiastic interns who were trained and supervised to go door-to-door to survey the North Highline population. Despite difficult conditions due to the safety concerns of both the lack of daylight and cold weather, interns managed to contact 775 local residents, provide information about the NHUAC preliminary recommendation from the November 3<sup>rd</sup> meeting, and gather survey input in response. This community outreach method not only provided more comprehensive and valid response data but also better-informed replies than a conventional mailed survey. The surveyors also obtained contact information from those who would like to be notified of future public meetings and focus groups.

### **Map of North Highline Unincorporated Area**



## Sample – Smaller walking map of neighborhoods



A typical surveyor's workload consisted of about 8 completed surveys a day. Due to the time of year, surveyors dealt with the difficulty of working in the dark and in bad weather. These factors also increased the difficulty of finding willing respondents. In some cases, finding someone at home might require a surveyor to walk back and forth in a neighborhood several times during a 3-4 hour period. Surveyors usually obtained responses from about 30-35 percent of the canvassed homes. The response rate, of course, varied by type of areas and time of day.

After basic demographic information was collected, respondents were informed of the preliminary recommendation of the NHUAC. All surveyors have been trained to ask each question as it was worded. Based upon the response entered by the surveyor, the computerized questionnaire determined the next question to be asked. While some questions required simple responses, others required the surveyor to categorize a response into a set of predetermined categories. Sometimes, surveyors had to type in answers directly, rather than selecting predetermined categories.

Additional demographic questions about home ownership, age, household size, race, languages, and education level were asked at the end to add further insight to the data collected.

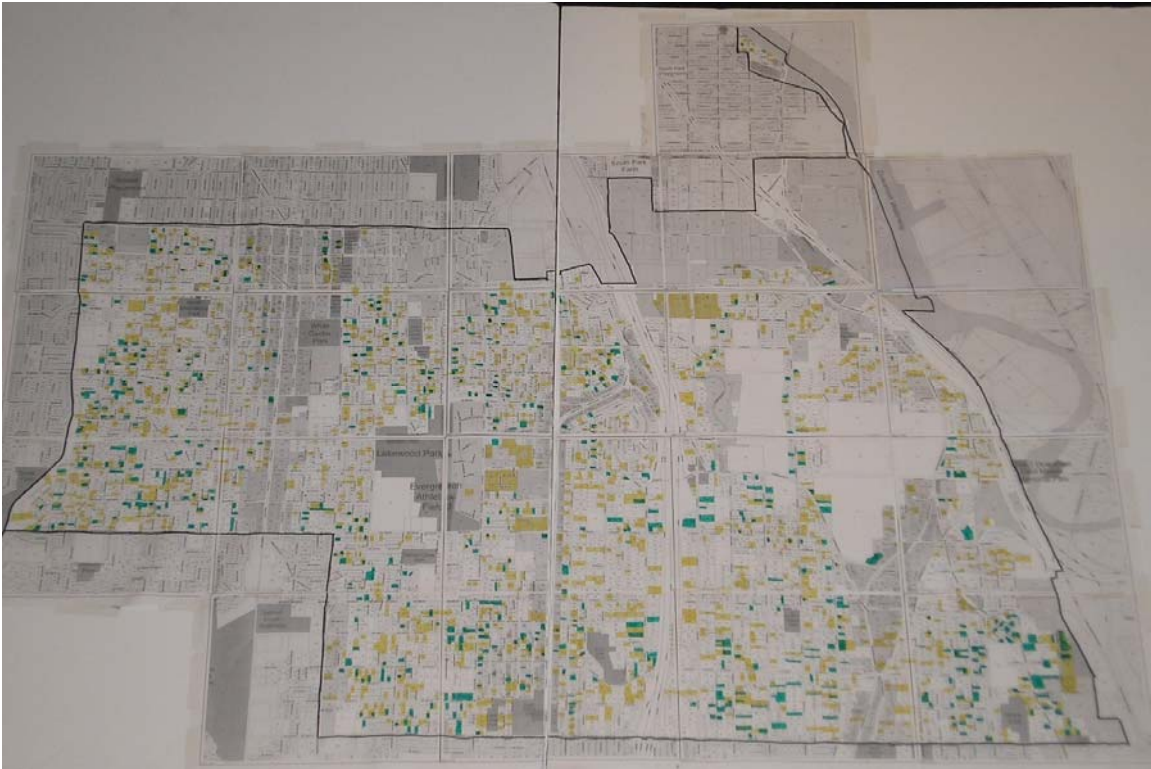
## Design of the Questionnaire

A draft of the questionnaire was prepared by the Connections Group and was presented to the Chair of the North Highline Unincorporated Area Council and the Chair of the Governance Committee for review. Several edits were made based on their input.

## Survey Results

A total of 775 surveys were completed between November 8<sup>th</sup> and November 21<sup>st</sup>, 2005. The interviews were done in all neighborhoods in the North Highline Unincorporated Area. Below is a map showing distribution of all the completed surveys. Each highlighted parcel represents at least one completed survey from that address. Some of the highlighted parcels cover a large area and they are usually apartment buildings, condominiums, or senior homes. No interview was conducted with area businesses and industries.

**Map detailing completed surveys (blue marking represents the 2<sup>nd</sup> phase of survey)**



**Overall a broad majority of 61.7% survey respondents agreed with the preliminary NHUAC recommendation to consider annexing to the City of Burien given that incorporating into a new City and staying unincorporated are not options.** With few exceptions, this broad majority view holds across the variables of neighborhood, years living in North Highline, education, home ownership or rental, race, and household size. However, respondents in South Park and a few other segments of the surveyed population appeared have interest and need for additional information before reaching a conclusion.

**Similarly, a majority 56.0% of survey respondents agreed with the NHUAC's direction not to consider a split annexation between Seattle and Burien.** Also with few exceptions, this broad majority view holds across the study variables of neighborhood, years living in North Highline, etc. Again, respondents in South Park and a few other segments of the surveyed population expressed interest and need for additional information before reaching a conclusion.

Appendix:

Survey Data and Cross-Tab  
Analysis



November 29, 2005

## Part One: Location and Duration of Residence

**Question 1:** What neighborhood/community do you live in?

• White Center	27.4%
• Boulevard Park	25.7%
• Burien	4.2%
• Seattle	3.6%
• King County	1.6%
• Top Hat	4.9%
• South Park	1.8%
• Salmon Creek	5.3%
• Shorewood	9.0%
• Arbor Lake	2.0%
• Rox Hill	0.1%
• Unincorporated King County	7.2%
• Sea-Tac	0.1%
• No idea	3.8%
• Other	3.3%

**Question 2:** How long have you lived in North Highline?

• Less than 1 year	6.2%
• About 1 or 2 years	12.8%
• Between 3 and 5 years	21.9%
• Between 6 and 10 years	17.3%
• More than 10 years	35.1%
• Born and live here all my life	4.1%
• Refused	0.7%
• Other	2.1%

## Part Two: Background Information and NHUAC Recommendations

### Background for Interviews [Read Out Loud]

As you may know, there has been talk in our community about what sort of local government we want in North Highline. Should we incorporate into our own city, or annex into a nearby city such as Seattle or Burien?

After months of study, meetings, and hearings, the North Highline Unincorporated Area Council just voted on Nov 3 that:

1. They conclude that incorporation as separate City would not be financially possible for North Highline.
2. They do not wish to consider splitting the North Highline area between Seattle and Burien and

3. They adopted a preliminary recommendation to consider annexation to the City of Burien.

King County has stated that under state growth management laws and County budget constraints, it is not feasible for North Highline to remain unincorporated. The County will not be able to continue supporting urban services in unincorporated areas of the County.

**For annexation to occur, the County has committed that there first would be a vote of the people in North Highline.**

**Question 3:** Given that becoming a new City and staying unincorporated are not options, would you agree that annexation to the City of Burien is a reasonable choice for residents of North Highline?

- Yes 61.7%
- No 15.5%
- Don't Know/Not Sure 18.4
- Other 4.4%

Notes:

61.7% of respondents agreed that the City of Burien is a reasonable choice of governance if becoming a new City and staying unincorporated are not options, though some felt compromised by the lack of options. A combined 18.5% were either unsure or didn't know, and 15.5% did not agree that Burien is a reasonable choice for North Highline. Note that disagreeing with Burien as a reasonable choice does not necessarily imply support for another option in particular.

**Question 4:** Do you agree with the direction not to consider splitting North Highline between Seattle and Burien?

- Yes 56.0%
- No 16.3%
- Don't Know/Not Sure 25.2%
- Other 2.5%

Notes:

56.0% of respondents agreed with the direction not to consider splitting North Highline between Seattle and Burien, while 16.3% disagreed. A combined 25.3% were either unsure or did not know if they agreed.

**Question 5:** Next month the North Highline Unincorporated Area Council will make a final recommendation on governance option. There will be several related meetings on annexation issues hosted by the Council, the County, and Burien. Would you like to be kept informed?

- Yes 44.8%
- No 55.2%

Notes:

44.8% of respondents said they would like to be kept informed, which is very high. In addition, 297 respondents provided their telephone number and/or their email address as a means to be kept informed.

**Question 6:** What additional information would help you decide what you wish to happen with North Highline government?

- None/don't know 73.1%
- Taxes and services 9.9%
- General information 6.7%
- Benefits/pros and cons 2.4%
- Misc. 7.9%

Notes:

73.1% of respondents either had no request for additional information or did not know what information would help them decide. This is because many respondents had made up their minds, and also because it can be difficult to answer such an open question. 9.9% wanted more information on taxes and services, in one way or another, and 6.7% wanted more general information.

## **Part Three: Demographic/Statistical Information**

**Question 7:** Do you own or rent your home?

- Own/Buying 76.0%
- Rent 20.3%
- Live rent free 1.5%
- Refused 2.2%

**Question 8:** What is your age? (Read brackets if necessary)

- 18-24 9.0%
- 25-29 9.1%
- 30-34 10.6%
- 35-39 13.9%
- 40-44 11.6%
- 45-49 9.8%
- 50-54 8.6%



- 55-59 7.4%
- 60-64 3.7%
- 65-69 4.5%
- 70-74 3.7%
- 75-79 2.2%
- >80 3.3%
- Refused 2.8%

**Question 9:** How many adults and children currently living in your household?

- 1 9.7%
- 2 32.6%
- 3 23.5%
- 4 17.5%
- 5 7.7%
- > 5 5.4%
- Refused 3.6%

**Question 10:** What race would you classify yourself as? (Read brackets if necessary)

- African American/Black 7.3%
- Caucasian/White 68.8%
- Latino/Hispanic 10.9%
- Asian/Asian American 6.8%
- African 0.4%
- Middle Eastern 0.1%
- Refused 1.6%
- Other 4.0%

**Question 11:** What other language is spoken at this household?

- Speak English 76.8%
- Spanish 12.5%
- Vietnamese 2.9%
- Cambodian 0.9%
- Somali 0.1%
- Russian 0.1%
- Refused 0.4%
- Other 6.2%

**Question 12:** What is the last grade you completed in school?

- High School Completion 28.8%
- Some College 32.2%
- College Graduate 28.4%
- Post Graduate 5.0%
- Other 5.5%

## Key Findings: Cross-Tab Analysis

### Burien Annexation by Neighborhood

Neighborhood of respondent	Is Burien a reasonable option for North Highline?				% of Final Respondents
	Yes	No	Don't Know/Not Sure	Other	
White Center	67.3%	14.2%	18.0%	0.5%	27.5%
Boulevard Park	61.6%	14.1%	17.7%	6.6%	25.8%
Burien	56.3%	12.5%	25.0%	6.3%	4.2%
Seattle	53.6%	28.6%	10.7%	7.1%	3.6%
King County	66.7%	25.0%	8.3%	0.0%	1.6%
Top Hat	68.4%	7.9%	15.8%	7.9%	4.9%
South Park	28.6%	7.1%	57.1%	7.1%	1.8%
Salmon Creek	58.5%	19.5%	9.8%	12.2%	5.3%
Shorewood	55.1%	17.4%	26.1%	1.4%	9.0%
Arbor Lake	73.3%	20.0%	6.7%	0.0%	2.0%
Rox Hill	100.0%	0.0%	0.0%	0.0%	0.1%
Unincorporated King County	55.6%	24.1%	18.5%	1.9%	7.0%
Sea-Tac	100.0%	0.0%	0.0%	0.0%	0.1%
Other	72.0%	20.0%	0.0%	8.0%	3.3%
No idea	58.6%	6.9%	34.5%	0.0%	3.8%

#### Notes:

With the exception of South Park, a large percentage of respondents from all neighborhoods agreed with the preliminary recommendation to consider annexation to Burien if incorporating and remaining unincorporated were not options. White Center and Boulevard Park residents were very comparable in their opinions with 67.3% and 61.6% in agreement with the recommendation, respectively. Respondents who identified as Seattle or King County were more likely than other neighborhoods to disagree with the recommendation, though overall they were still largely supportive. South Park residents concurred with the recommendation in greater numbers than those who disagreed, but the majority surveyed was unsure.

## Burien Annexation by Years Living in Area

How Long Living in the Community	Is Burien a Reasonable Choice for North Highline?				% of Final Respondents
	Yes	No	Don't Know/Not Sure	Other	
Less than 1 year	66.0%	8.5%	21.3%	4.3%	6.2%
About 1 or 2 years	60.2%	15.3%	23.5%	1.0%	12.8%
Between 3 and 5 years	62.3%	9.0%	24.6%	4.2%	21.9%
Between 6 and 10 years	62.1%	14.4%	19.7%	3.8%	17.3%
More than 10 years	63.1%	21.3%	11.6%	4.1%	35.1%
Born and lived here all my life	54.8%	19.4%	22.6%	3.2%	4.1%
Other	62.5%	12.5%	12.5%	12.5%	2.1%
Refused	60.0%	0.0%	20.0%	20.0%	0.7%

Notes:

Regardless of how long respondents had lived in the community, the percentage of those who agreed with the preliminary recommendation to consider annexation to Burien is generally consistent. However, respondents who have lived in the community for more than 10 years or all of their life were more inclined to disagree than those who have lived in the area for less time. A significant amount of respondents did not know their opinion.

## Burien Annexation by Home Ownership/Rental

Home Ownership	Is Burien a reasonable choice for North Highline?				% of Final Respondents
	Yes	No	Don't Know/Not Sure	Other	
Own / Buying	60.6%	18.1%	16.8%	4.5%	76.0%
Rent	70.1%	7.1%	20.8%	1.9%	20.3%
Live rent free	45.5%	9.1%	45.5%	0.0%	1.5%
Refused	64.7%	11.8%	23.5%	0.0%	2.2%

Notes:

60.6% of respondents who owned or were buying their home and 70.1% of respondents who rented agreed with the preliminary recommendation to consider annexation to Burien. Respondents live rent free were more likely to be unsure than other groups.

## Burien Annexation by Education

Education	Is Burien a Reasonable Choice for North Highline?				% of Final Respondents
	Yes	No	Don't Know/Not Sure	Other	
Other	53.7%	22.0%	22.0%	2.4%	5.5%
High School Completion	57.9%	15.9%	21.0%	5.1%	28.8%
Some College	65.3%	12.1%	20.5%	2.1%	32.2%
College Graduate	66.4%	13.3%	15.2%	5.2%	28.4%
Post Graduate	56.8%	37.8%	5.4%	0.0%	5.0%

Notes:

Respondents of all levels of education had high percentages agreeing with the preliminary recommendation to consider annexation to Burien, though those with post graduate education were much more likely to disagree with the recommendation than other respondents, with 37.8% disagreeing.

## Burien Annexation by Race

Race	Is Burien a Reasonable Choice for North Highline?				% of Final Respondents
	Yes	No	Don't Know/Not Sure	Other	
African American / Black	70.9%	9.1%	16.4%	3.6%	7.3%
Caucasian / White	62.5%	16.2%	17.0%	4.3%	68.8%
Latino / Hispanic	59.8%	14.6%	23.2%	2.4%	10.9%
Asian / Asian American	52.9%	13.7%	31.4%	2.0%	6.8%
African	33.3%	33.3%	33.3%	0.0%	0.4%
Middle Eastern	100.0%	0.0%	0.0%	0.0%	0.1%
Other	73.3%	10.0%	13.3%	3.3%	4.0%
Refused	58.3%	33.3%	8.3%	0.0%	1.6%

Notes:

Respondents from all racial classifications with sufficient sampling size had high percentages agreeing with the preliminary recommendation to consider annexation to Burien. Of these, respondents who classified themselves as African American/Black had the highest percentage of agreement with 70.9%, while Asian/Asian American had the lowest with 52.9%.

## Burien Annexation by Household Size

Household Size	Is Burien a Reasonable Choice for North Highline?				% of Final Respondents
	Yes	No	Don't Know/Not Sure	Other	
1	52.1%	26.0%	19.2%	2.7%	9.7%
2	58.1%	18.7%	17.5%	5.7%	32.6%
3	65.0%	12.4%	20.3%	2.3%	23.5%
4	67.4%	10.6%	18.2%	3.8%	17.5%
5	69.0%	10.3%	17.2%	3.4%	7.7%
> 5	63.4%	14.6%	22.0%	0.0%	5.4%
Refused	74.1%	14.8%	7.4%	3.7%	3.6%

Notes:

Respondents from all household sizes had high percentages agreeing with the preliminary recommendation to consider annexation to Burien, though respondents with household sizes of three or more persons had higher percentages agreeing. Respondents from households of two or less persons were more likely to disagree than other respondents.

## Split Annexation by Household Size

Household Size	Agreement with the Direction <u>Not</u> to Split Annex				% of Final Respondents
	Yes	No	Don't Know/Not Sure	Other	
1	50.7%	31.5%	12.3%	5.5%	9.7%
2	53.3%	17.9%	26.8%	2.0%	32.6%
3	54.2%	14.7%	28.2%	2.8%	23.5%
4	61.4%	12.9%	24.2%	1.5%	17.5%
5	56.9%	8.6%	32.8%	1.7%	7.7%
> 5	68.3%	17.1%	9.8%	4.9%	5.4%
Refused	63.0%	7.4%	29.6%	0.0%	3.6%

Notes:

Though there were variations, respondents from all household sizes agreed in high percentages with the direction to not consider split annexation. With 31.5% disagreeing, respondents from households with only one person were much more likely to disagree than those from households with more than one person.

## Split Annexation by Neighborhood

Neighborhoods	Agreement with the Direction <u>Not</u> to Split Annex				% of Final Respondents
	Yes	No	Don't Know/Not Sure	Other	
White Center	59.2%	15.6%	23.2%	1.9%	27.5%
Boulevard Park	59.6%	16.7%	21.2%	2.5%	25.8%
Burien	48.4%	16.1%	29.0%	6.5%	4.0%
Seattle	46.4%	10.7%	42.9%	0.0%	3.7%
King County	66.7%	25.0%	8.3%	0.0%	1.6%
Top Hat	39.5%	26.3%	26.3%	7.9%	5.0%
South Park	21.4%	14.3%	64.3%	0.0%	1.8%
Salmon Creek	43.9%	36.6%	17.1%	2.4%	5.4%
Shorewood	56.5%	13.0%	30.4%	0.0%	9.0%
Arbor Lake	60.0%	20.0%	20.0%	0.0%	2.0%
Rox Hill	100.0%	0.0%	0.0%	0.0%	0.1%
Unincorporated King County	58.5%	9.4%	32.1%	0.0%	6.9%
Sea-Tac	100.0%	0.0%	0.0%	0.0%	0.1%
Other	68.0%	4.0%	20.0%	8.0%	3.3%
No idea	51.7%	10.3%	31.0%	6.9%	3.8%

### Notes:

Respondents from almost all neighborhoods agreed in high percentages with the direction to not consider a split annexation. Respondents from White Center and Boulevard Park were very comparable in their opinions agreeing and disagreeing with the direction. However, there were variations in the opinions of respondents from Top Hat, Salmon Creek, and South Park, where there were higher percentages disagreeing or unsure of their opinion than in other neighborhoods. In the case of South Park, this is likely due to its geographical location.